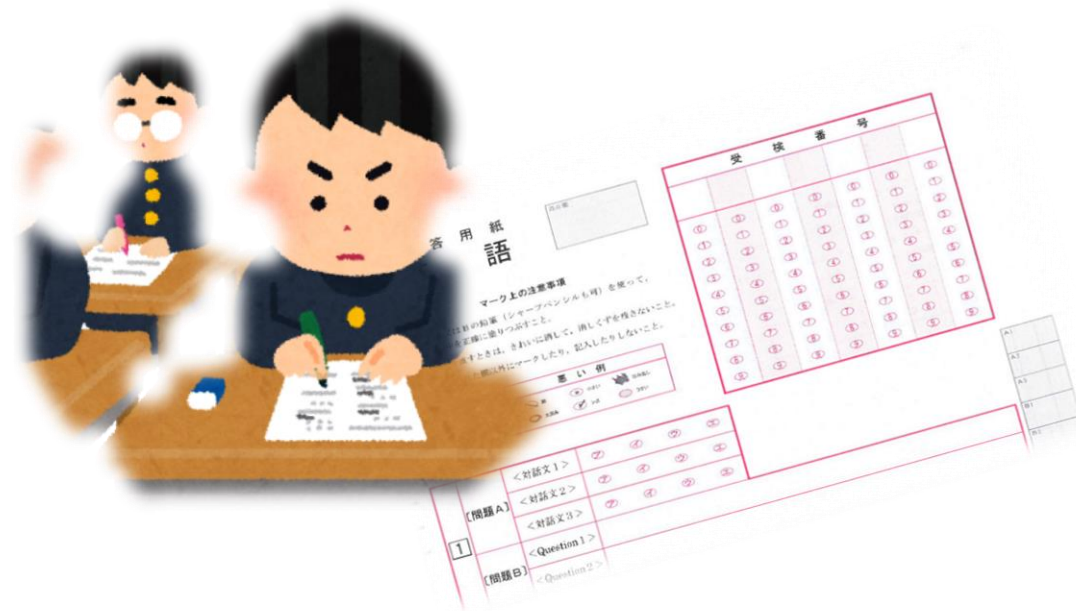





# About Entrance Examination



# Application Qualification

(People who can take the entrance examination of the metropolitan high school )

-  **Completed 9 years of school education**
-  **Full-time**  
=People living in Tokyo with parents.
-  **Part-time**  
=People living in Tokyo or working in Tokyo

Important!!

In the metropolitan high school examination, you have to enroll in the first high school you path.

1/26 (Tue) 27 (Wed)

## Admission by Recommendation

<b>Target of exam.</b>	Only Junior high school students in Tokyo.
<b>Admission method</b>	school reports (chōsasho), group discussion, personal interviews, essay compositions, and skills tests etc.
<b>procedure</b>	Submit a nomination request and receive a recommendation from the junior high school principal.
<b>Number of applicants</b>	Few.

# Entrance Examination for Special Quota

1/26 (Tue)

2/16 (Tue)

**Special Quota For Foreign National Students  
residing in Tokyo Metropolitan District.**

<b>Target/ Qualification</b>	Foreign students coming to Japan within 3 years. (Dual nationality allowed) People who live or plan to live in Tokyo
<b>Admission method</b>	Essay composition(Japanese or English) and Interview(Japanese or English)
<b>procedure</b>	Apply after undergoing qualification examination.
<b>Number of applicants/ Test month</b>	Few. Jan(7 schools)      Feb(1 school)

# Qualification of special quota for foreign students

**When: December**

**Where: Tokyo Metropolitan Office**

- ★ Check the qualification date by HP of schools or Tokyo Metropolitan Board of Education.
- ★ Prepare your application documents early.

# Entrance Examination for Special Quota

**2/16 (Tue)**

## Special Quota for Overseas returnee

<b>Target/ Qualification</b>	Having Japanese nationality, living (lived)abroad with the parents and is going to live in Tokyo until admission date.(include plans)
<b>Admission method</b>	<ul style="list-style-type: none"><li>▪ Japanese ▪ Math ▪ English and Essay composition.</li><li>▪ Interview and essay composition in Japanese or English. (For Local School Graduates Examination of Kokusai H. S.)</li></ul>
<b>procedure</b>	Apply after being qualified for high school. (There is a limit to the qualification by the period of abroad and after returning)
<b>Implementation schools/Number of applicants</b>	4 schools / Few

# Entrance Examination for Special Quota

**2/16 (Tue)**

**Special Quota For Returning Japanese Displaced by the War in China and their Descendants**

<b>Target/ Qualification</b>	<b>Having an address in Tokyo along with the parents who are repatriates. Or is certain to have an address until the admission date and continue to go to school from Tokyo after that.</b>
<b>Admission method</b>	<b>Interview and essay composition in Japanese.</b>
<b>procedure</b>	<b>Apply after confirming your qualification at the high school or Tokyo Metropolitan Board of Education. You have to prepare your application documents. (Repatriation Certificate etc.)</b>
<b>Implementation schools/Number of applicants</b>	<b>3 schools / Few</b>

**2/21 (Sun)**

## Academic Performance Test

### Full-time high school

First Exam · The Divisive Previous Exams

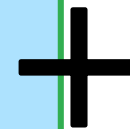
**Subjects: 5 subjects (Japanese · Math · English ·  
Social Studies · Science)**

### Part-time high school

First Exam · The Divisive Previous Exams

**Subjects: almost 3 subjects  
(Japanese · Math · English)**

The school decides the number of subjects.



Interview



3/10(Wed)

## Academic Performance Test



Full-time and Day and Night Part-Time high school

Second Exam・The Divisive Late Exam

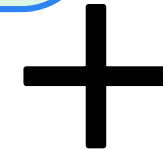
Subjects : 3 subjects

(Japanese・Math・English)

3/26(金)



Part-time high school



Interview

Second Exam

Subjects : 3 subjects

(Japanese・Math・English)