

# Preparation for Entrance Examination



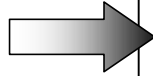
- 1. Future learning schedule**
- 2. Let's decide the school  
you want to study!**

# ~For 9<sup>th</sup> grader in Japanese junior high school~

## 1. Schedules for future exam.

### July

First survey about future perspectives

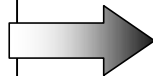


- Do you like to attend high school or find employment?
- Do you like to go to a Tokyo Metropolitan high school?
- Do you like to go to a private school?
- Do you wish to attend a particular high school?

Academic performance of 1st Semester

- Academic records of the 1st semester are crucial!

Parent-Teacher-Student Meeting



- Which is your first choice of high school?
- Study plans for summer vacation.
- Visiting a high school during summer holidays.

Summer Vacation

- First half, latter half: School curriculum follow-up
- Visit a high school and experience lessons first.

◎But no plans this year for covid-19

Let' s study hard during the summer vacation!

**Summer vacation is the most important time for your studies!**

Japanese/Math/English

Attend tutorial support class, if you can.

## September 2nd Semester

Gather information on High Schools!  
Attend school cultural festivals!  
Introductory sessions/trial classes in September–December as usual.

But no plans this year for covid-19, so check the school Homepage carefully.

·Take a trial examination at school and / at other venues, in the second semester.

## October

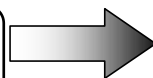
Mid-term Examinations

Guidance session for future courses at Junior High Schools.

## November

Second survey about future perspectives

Parent–Teacher–Student Meeting



Which High Schools will you apply for?

· Would you like a recommendation to attend a private, or a Tokyo Metropolitan high school?

Final Examinations

December

**Internal academic evaluation will be completed**

Evaluation will be based on performance records from 1<sup>st</sup> and 2<sup>nd</sup> semesters!

Third survey about future perspectives

Parent-Teacher-Student Meeting

Academic performance of 2nd Semester

\* *Career consultation about private high school*

From December 15th: Consultation on high school enrollment (with Junior high school teachers and private high school teachers in Tokyo) as usual year.

Recommended students & those who will take exams.

©But this year, the schedule is not certainly.

Fill in high school names in application forms

Final Decision!

- Make sure to try admission exams from previous years of your targeted schools.  
Japanese/Math/English  
(Social studies/Science)
- Attend nearby tutorial support class if you can.

**Winter Vacation**

# 3rd semester

## January Entrance examination

Internal recommendation to enter private high school  
Internal recommendation to enter Tokyo Metropolitan high school  
Special quota for foreign national students

\* It is difficult to secure an internal recommendation for a Tokyo Metropolitan high school.

## February Entrance Examination

Admission exams for private high school  
Admission exams for Tokyo Metropolitan high school

- Special quota for overseas returnee
- Special quota for returning Japanese displaced by the War in China and their descendants
- The first-term exam.

Admission exams for Tokyo Metropolitan high schools (the second-term exam, The divisive late exam)

Admission exams for Tokyo Metropolitan part-time high schools (the second-term exam)

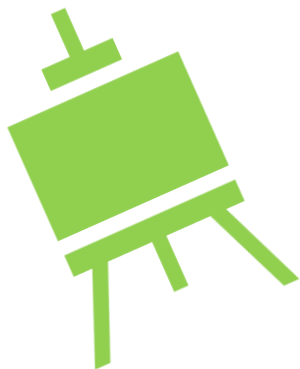
For covid-19, scope of entrance exam and application method may change. Let's find out the entrance examination information carefully!

## 2. Let's decide the school you want to study!

Carefully research the features and choose the school that suits you !

School atmosphere or features, Level, Distance from home, Japanese language support, etc.

**Next; Schools with relatively many foreign students**



# 1. Schools with Special Quota For Foreign National Students

Full time system · Foreign students who have been in Japan for less than three years


High School Name	Exam day	
Asuka	1/26	❖ <b>Content of entrance examination</b>  ▪ Essay composition (Japanese or English) and Interview (Japanese or English)  ❖ There is a qualification examination.
Tagara		
Takenodai		
Minami-katsushika		
Fuchu-Nishi		
Rokugo-Koka		
Suginami-Sogo		
Kokusai	2/16	

## 2. Day and Night Part-Time High Schools

### Credit system

You can choose three parts in the morning, afternoon and evening and enter the school

High School Name	Exam day	
Hitotsubashi	The first-term exam 2/21	❖ Content of entrance examination
Asakusa	The second-term exam 3/10	Japanese・Math・ English and Interview(Japanese)
Shinjuku-yamabuki		
Ogikubo		❖ Graduated 3~4 years
Sunagawa		
Hachioji-takushin		






### 3.Challenge School

**Part-time High School based on credits.**

**Offer morning, afternoon and evening classes.**


High School Name	Exam day	
Kirigaoka	2/21	❖ Content of entrance examination
Setagaya-izumi		▪ Entrance application
Ooedo		▪ Interview
Roppongi		▪ Essay compositions
Minorigaoka		✂ They are instead of
Hachioji-takushin		exams( Eng. Math Jap.) or academic record of Junior High School.
		❖ Small classes

## 4. Encourage School

Full time system

Learning from basics


Experience-based small class adapted to ability of each student

High School Name	Exam day	
Adachi-higashi	2/21	❖ Content of entrance examination
Kamata		▪ Junior high school record
Akirudai		▪ Interview
Higashi-murayama		▪ Essay composition
Nerima-Kogyo		
Nakano-Kogyo		

# 5.Night Part-Time High School

Studying from 5 p.m. to 9 p.m. in the evening.

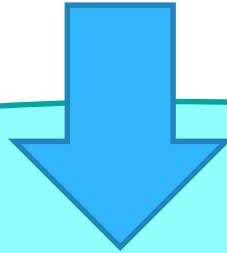
Graduation in 4 years (3years graduation possible at some school)

High School Name	Exam day	
<b>There are about 40 night</b>	2/21	❖ Content of entrance examination
<b>part-time high schools in Tokyo</b>		Japanese・Math・English and Interview
		❖ Graduated 3~4 years
		❖ Small class ❖ Japanese support system



**People who do not Know how to study.**

**People want to talk about high school.**



**Let's go to volunteer support classroom near your house.**



# Volunteer Support and Consultation Groups in Tokyo

Arakawa-ku	<b>Tabunka Free School – Main Campus</b> (Tabunka Kyōsei Center Tokyo)	<b>Machiya Station (Tokyo metro Chiyoda-line, Keisei-line)</b> (10 minutes) <b>Arakawa Ni-chome Station (Toden-line) (10 minutes)</b> <b>JR Mikawashima Station (Joban-line) (10 Minutes)</b> TEL/FAX : 03-6807-7937 e-mail : info@tabunka.or.jp URL : https://tabunka.or.jp/
	<b>CCS Nippori Center</b>	<b>Nippori Station (JR Yamanote-line) (5 minutes)</b> e-mail : ccs@e-mail.jp URL : http://www.ccs-ngo.org/
Nerima-ku	<b>CCS Nerima Center</b>	<b>Shakujii Koen Station (Seibu Ikebukuro-line) (3 minutes)</b> e-mail : ccs@e-mail.jp URL : http://www.ccs-ngo.org/
Suginami-ku	<b>Tabunka Free School – Suginami Campus</b> (Tabunka Kyōsei Center Tokyo)	<b>logi Station (Seibu Shinjuku-line) (12 minutes),</b> TEL/FAX : 03-6915-0200 e-mail : info@tabunka.or.jp URL : https://tabunka.or.jp/

<b>Shinjuku-ku</b>	<b>CCS Shinjuku Center</b>	<b>Shin Ookubo Station</b> (JR Yamanote-line) (10 minutes) <b>Higashi Shinjuku Station</b> (Tokyo Metro Fuku toshin-line & Toei Oedo-line)(5 minutes)  e-mail : <a href="mailto:ccs@e-mail.jp">ccs@e-mail.jp</a> URL : <a href="http://www.ccs-ngo.org/">http://www.ccs-ngo.org/</a>
<b>Ohta-ku</b>	<b>OCNet Incorporated</b>	<b>Hasunuma Station</b> (Tokyū Ikegami-line) (3minutes)  TEL/FAX : 03-3730-0556 e-mail : <a href="mailto:jimukyoku@ocnet.jp">jimukyoku@ocnet.jp</a> URL : <a href="http://www.ocnet.jp/ja/nihongo/soudan_kodomo.html">http://www.ocnet.jp/ja/nihongo/soudan_kodomo.html</a>
	<b>Legato Ota</b>	<b>Kamata Station</b> (JR Keihintohoku-line) (6 minutes) TEL/FAX : 03-6331-4881 URL : <a href="http://legatoota.jp/index.html">http://legatoota.jp/index.html</a>
<b>Shinagawa-Ku</b>	<b>IWC Kokusai Shimin no Kai</b>	<b>Togoshikoen Station</b> (Tokyu Oimachi-line) (1 minute) TEL : 03-6423-0954 FAX :03-6423-0955 e-mail : <a href="mailto:iwc@npo-iwc.com">iwc@npo-iwc.com</a> URL : <a href="http://www.npo-iwc.org/gogaku">http://www.npo-iwc.org/gogaku</a>

<b>Shinagawa-ku</b>	<b>CCS Meguro Center</b>	<b>Meguro Station</b> (JR Yamanote-line, Tokyo Metro Nanboku-line, Tokyū Meguro- line) (3 minutes) e-mail : ccs@e-mail.jp URL : <a href="http://www.ccs-ngo.org/">http://www.ccs-ngo.org/</a>
	<b>CTIC (Catholic Tokyo International Center)</b>	<b>Meguro Station</b> (JR Yamanote-line, Tokyo Metro Nanboku-line, Tokyū Meguro- line) (3 minutes) Tel : 03-5759-1061 Fax : 03-5759-1063 URL : <a href="http://www.ctic.jp/index.html">http://www.ctic.jp/index.html</a>
<b>Musashino-shi</b>	<b>MIA (Musashino International Association)</b>	<b>Musashi sakai Station</b> (JR Chuō-line) (1 minute) TEL : 0422-36-4511 FAX : 0422-36-4513 e-mail : mia@coral.ocn.ne.jp URL : <a href="http://www.mia.gr.jp/">http://www.mia.gr.jp/</a>
<b>Nishitokyo-shi</b>	<b>Nishitokyo Multicultural and International Center</b>	<b>Tanashi Station</b> (Seibu Shinjuku-line) (2 minutes) TEL/FAX : 042-461-0381 e-mail: info@nimic.jp URL: <a href="http://www.nimic.jp/">http://www.nimic.jp/</a>



<b>Hachioji-shi</b>	<b>CCS Hachioji Center</b>	<b>Hachioji Station</b> (JR Chuo-line) (2 minutes) <b>Keiō Hachioji Station</b> (Keiō-line) (7 minutes) e-mail : <a href="mailto:ccs@e-mail.jp">ccs@e-mail.jp</a> URL : <a href="http://www.ccs-ngo.org/">http://www.ccs-ngo.org/</a>
	<b>Hachioji International Association</b> <b>Hachioji Ekimae Learning Class</b>	<b>Hachioji Station</b> (JR Chuo-line) (2 minutes) <b>Keiō Hachioji Station</b> (Keiō-line) (7 minutes)
	<b>Hachioji International Association</b> <b>Kitano Learning Class</b>	<b>Kitano Station</b> (Keiō-line) (3 minutes) TEL/FAX : 042-642-7091 e-mail : <a href="mailto:koko-8@nifty.com">koko-8@nifty.com</a> <a href="http://hachiojikokusai.world.coocan.jp">http://hachiojikokusai.world.coocan.jp</a>
<b>Fussa-shi</b>	<b>YSC Global School</b>	<b>Fussa Station</b> ・ <b>Ushihama Station</b> (JR Ome-line) (10 minutes) TEL : 042-552-7400 FAX : 042-513-0266 e-mail : <a href="mailto:info@kodomo-nihongo.com">info@kodomo-nihongo.com</a> <a href="http://kodomo-nihongo.com/">http://kodomo-nihongo.com/</a>

※ There are more support groups in Tokyo. Contact any of the organizations in this list for more information.