

Preparation for Entrance Examination



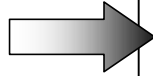
- 1. Future learning schedule**
- 2. Let's decide the school
you want to study!**

~For 9th grader in Japanese junior high school~

1. Schedules for future exam.

July

First survey about future perspectives

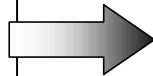


- Do you like to attend high school or find employment?
- Do you like to go to a Tokyo Metropolitan high school?
- Do you like to go to a private school?
- Do you wish to attend a particular high school?

Academic performance of 1st Semester

- Academic records of the 1st semester are crucial!

Parent-Teacher-Student Meeting



- Which is your first choice of high school?
- Study plans for summer vacation.
- Visiting a high school during summer holidays.

Summer Vacation

- First half, latter half: School curriculum follow-up
- Visit a high school and experience lessons first.

◎But no plans this year for covid-19

Let' s study hard during the summer vacation!

Summer vacation is the most important time for your studies!

Japanese/Math/English

Attend tutorial support class, if you can.

September 2nd Semester

Gather information on High Schools!
Attend school cultural festivals!
Introductory sessions/trial classes in September–December as usual.

But no plans this year for covid-19, so check the school Homepage carefully.

·Take a trial examination at school and / at other venues, in the second semester.

October

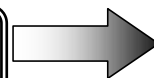
Mid-term Examinations

Guidance session for future courses at Junior High Schools.

November

Second survey about future perspectives

Parent–Teacher–Student Meeting



Which High Schools will you apply for?

· Would you like a recommendation to attend a private, or a Tokyo Metropolitan high school?

Final Examinations

December

Internal academic evaluation will be completed

Evaluation will be based on performance records from 1st and 2nd semesters!

Third survey about future perspectives

Parent-Teacher-Student Meeting

Academic performance of 2nd Semester

* *Career consultation about private high school*

From December 15th: Consultation on high school enrollment (with Junior high school teachers and private high school teachers in Tokyo) as usual year.

Recommended students & those who will take exams.

©But this year, the schedule is not certainly.

Fill in high school names in application forms

Final Decision!

- Make sure to try admission exams from previous years of your targeted schools.
Japanese/Math/English (Social studies/Science)
- Attend nearby tutorial support class if you can.

Winter Vacation

3rd semester

January Entrance examination

Internal recommendation to enter private high school
Internal recommendation to enter Tokyo Metropolitan high school
Special quota for foreign national students

* It is difficult to secure an internal recommendation for a Tokyo Metropolitan high school.

February Entrance Examination

Admission exams for private high school
Admission exams for Tokyo Metropolitan high school

- Special quota for overseas returnee
- Special quota for returning Japanese displaced by the War in China and their descendants
- The first-term exam.

Admission exams for Tokyo Metropolitan high schools (the second-term exam, The divisive late exam)

Admission exams for Tokyo Metropolitan part-time high schools (the second-term exam)

For covid-19, application method may change.

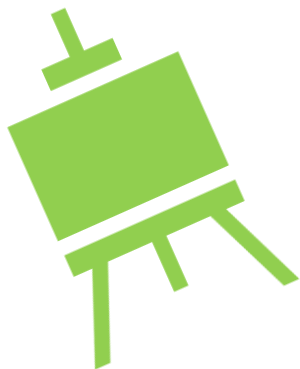
Let's find out the entrance examination information carefully!

2. Let's decide the school you want to study!

Carefully research the features and choose the school that suits you !

School atmosphere or features, Level, Distance from home, Japanese language support, etc.

Next; Schools with relatively many foreign students



1. Schools with Special Quota For Foreign National Students

Full time system · Foreign students who have been in Japan for less than three years

High School Name	Exam day	
Asuka	1/26	❖ Content of entrance examination ▪ Essay composition (Japanese or English) and Interview (Japanese or English) ❖ There is a qualification confirmation.
Tagara		
Takenodai		
Minami-katsushika		
Fuchu-Nishi		
Rokugo-Koka		
Suginami-Sogo		
Kokusai	2/15	

2. Day and Night Part-Time High Schools

Credit system


You can choose three parts in the morning, afternoon and evening and enter the school

High School Name	Exam day	
Hitotsubashi	The first-term exam 2/21	❖ Content of entrance examination
Asakusa	The second-term exam 3/9	Japanese・Math・ English and Interview(Japanese)
Shinjuku-yamabuki		
Ogikubo		❖ Graduated 3~4 years
Sunagawa		
Hachioji-takushin		

3.Challenge School

Part-time High School based on credits.

Offer morning, afternoon and evening classes.

High School Name	Exam day	
Kirigaoka	2/21	❖ Content of entrance examination
Setagaya-izumi		▪ Entrance application
Ooedo		▪ Interview
Roppongi		▪ Essay compositions
Minorigaoka		✂ They are instead of
Hachioji-takushin		exams(Eng. Math Jap.) or academic record of Junior High School.
		❖ Small classes
Odaihashi		★ Start in April 2022


4. Encourage School

Full time system

Learning from basics

Experience-based small class adapted to ability of each student

High School Name	Exam day	
Adachi-higashi	2/21	❖ Content of entrance examination
Kamata		▪ Junior high school record
Akirudai		▪ Interview
Higashi-murayama		▪ Essay composition
Nerima-Kogyo		
Nakano-Kogyo		



5.Night Part-Time High School

Studying from 5 p.m. to 9 p.m. in the evening.

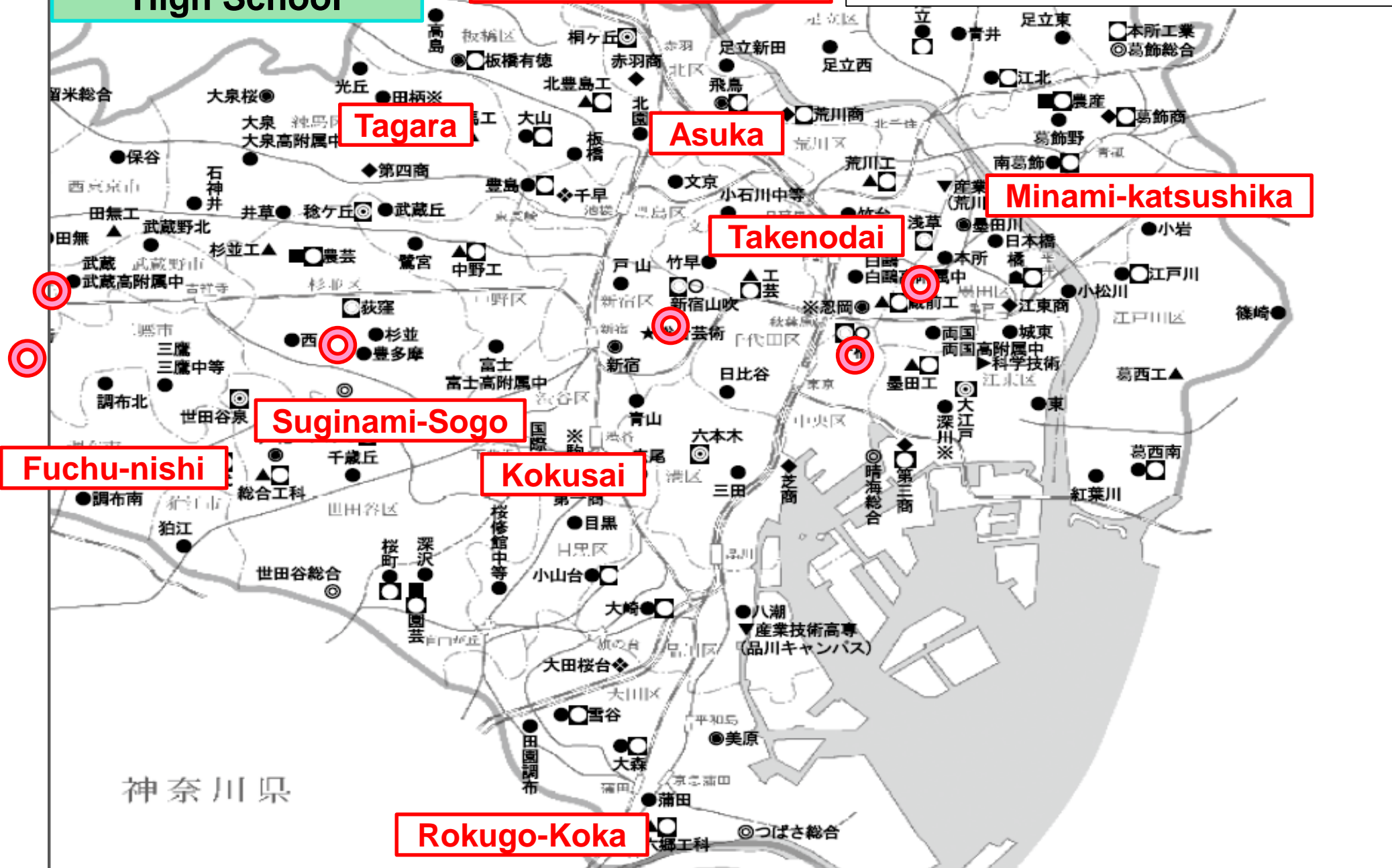
Graduation in 4 years (3years graduation possible at some school)

High School Name	Exam day	
There are about 40 night part-time high schools in Tokyo	The first- term exam 2/21	❖ Content of entrance examination
	The second- term exam 3/25	Japanese・Math・English and Interview
		❖ Graduated 3~4 years
		❖ Small class ❖ Japanese support system

Map of Metropolitan High School

Schools with Special Quota for Foreign Students (8schools)

⊙ ⇒ Night and Daytime Part-time high school (6 schools)



Tagara

Asuka

Minami-katsushika

Takenodai

Suginami-Sogo

Fuchu-nishi

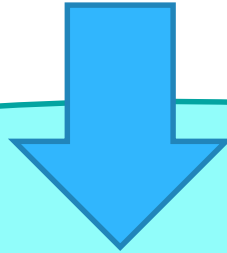
Kokusai

Rokugo-Koka

神奈川県

People who do not Know how to study.

People want to talk about high school.



Let's go to volunteer support classroom near your house.



Volunteer Support and Consultation Groups

Arakawa-ku	Tabunka Free School – Main Campus (Tabunka Kyōsei Center Tokyo)	① Machiya Station (Tokyo metro Chiyoda-line, Keisei-line) ② Arakawa City Office Station (Toden-line) ③ JR Mikawashima Station (Joban-line) TEL/FAX: 03-6807-7937 e-mail: info@tabunka.or.jp URL: https://tabunka.or.jp/en/
Nerima-ku	CCS Nerima Center <div style="border: 1px solid black; border-radius: 10px; padding: 5px; display: inline-block;"> ※ Online support from January 2021 </div>	Shakujii Koen Station (Seibu Ikebukuro-line) e-mail: ccs@e-mail.jp URL: http://ccs-ngo.main.jp/
Suginami-ku	Tabunka Free School – Suginami Campus (Tabunka Kyōsei Center Tokyo)	logi Station (Seibu Shinjuku-line) TEL/FAX: 03-6915-0200 Email: info@tabunka.or.jp URL: https://tabunka.or.jp/en/
Adachi-ku	YSC Global School Adachi · Takenotsuka	Takenotsuka Station (TOBU SKYTREE Line) TEL: 03-6802-5397 FAX: 03-6802-5398 e-mail: gs_adachi@kodomo-nihongo.com URL: https://www.kodomo-nihongo.com/

Volunteer Support and Consultation Groups

Ohta-ku	OCNet Incorporated	Hasunums Station (Tokyū Tamagawa-line, Ikegami-line) TEL / FAX : 03-3730-0556 e-mail : jimukyoku@ocnet.jp URL : http://www.ocnet.jp/ja/nihongo/kodomo_nihongo.html
	Legato Ota	Kamata Station (JR Keihintohoku-line) TEL/FAX : 03-3731-3831 URL : http://legatoota.jp/index.html
Shinagawa-ku	IWC Kokusai Shimin no Kai	Omori Station (Keihintohoku-line) TEL : 03-6423-0954 FAX : 03-6423-0955 e-mail : iwc@npo-iwc.com URL : http://www.npo-iwc.com
	CCS Meguro Center <div style="border: 1px solid black; border-radius: 15px; padding: 5px; width: fit-content; margin: 10px auto;"> ※ Online support from January 2021 </div>	Meguro Station (JR Yamanote-line, Tokyo Metro Nanboku-line, Tokyū Meguro- line) e-mail : ccs@e-mail.jp URL : http://ccs-ngo.main.jp/

Shinagawa -ku	CTIC (Catholic Tokyo International Center)	Meguro Station (JR Yamanote-line, Tokyo Metro Nanboku-line, Tokyū Meguro- line) Tel: 03-5759-1061 Fax: 03-5759-1063 URL : https://ctic.jp/en/
Bunkyo -ku	Japanese language support class at TOYO University (SPIRIT) ✂Currently, only online support is available.	Hakusan Station (Toei Subway Mita-line) 5 minute from exit A3 to Main gate, South Gate 5 minute from exit A1 to West gate e-mail : gakusupo@yahoo.co.jp URL : http://spirit.toyo.ac.jp/
Musashino- shi	MIA (Musashino International Association)	Musashi sakai Station (JR Chuō-line) TEL: 0422-36-4511 FAX: 0422-36-4513 e-mail : mia@coral.ocn.ne.jp URL : https://mia.gr.jp/en/
Nishitokyo- shi	NIMIC (Nishitokyo Multicultural and International Center)	Tanashi Station (Seibu Shinjuku-line) TEL/FAX: 042 - 461 - 0381 e-mail : info@nimic.jp URL : https://www.nimic.jp/en/
Fussa-shi	YSC Global School	Fussa Station (JR Ome-line) TEL: 042-552-7400 FAX: 042-513-0266 e-mail : info@kodomo-nihongo.com URL : https://www.kodomo-nihongo.com/

Volunteer Support and Consultation Groups

Hachioji-shi	CCS Hachioji Center <div style="border: 1px solid black; border-radius: 10px; padding: 5px; display: inline-block; margin-top: 10px;"> ※ Online support from January 2021 </div>	① Hachioji Station (JR Chuo-line) ② Keiō Hachioji Station (Keiō-line) e-mail: ccs@e-mail.jp URL: http://ccs-ngo.main.jp/
	Hachioji International Association Hachioji Ekimae Learning Class	① Hachioji Station (JR Chuo-line) ② Keiō Hachioji Station (Keiō-line) TEL/FAX: 042-642-7091 e-mail: 802_kk@jcom.zaq.ne.jp URL: http://hia855.com/#
	Hachioji International Association Kitano Learning Class	Kitano Station (Keiō-line) TEL/FAX: 042-642-7091 e-mail: 802_kk@jcom.zaq.ne.jp URL: http://hia855.com/#

※ There are more support groups in Tokyo. Contact any of the organizations in this list for more information.