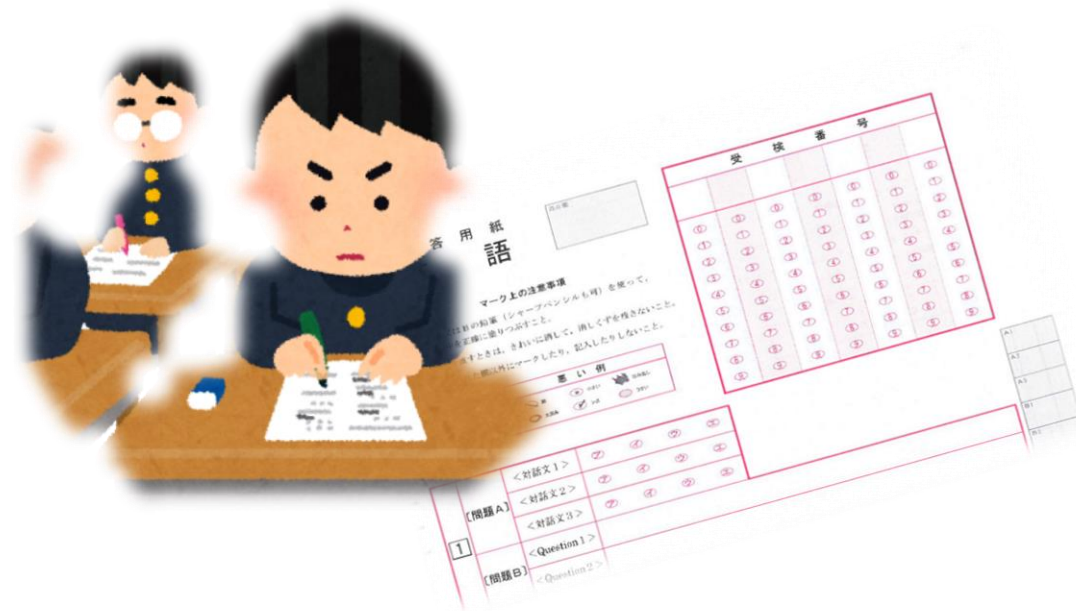





About Entrance Examination



Application Qualification

(People who can take the entrance examination of the metropolitan high school)

-  **Completed 9 years of school education**
-  **Full-time**
=People living in Tokyo with parents.
-  **Part-time**
=People living in Tokyo or working in Tokyo

Important!!

In the metropolitan high school examination, you have to enroll in the first high school you passed.

1/26 (Thu) - 27 (Fri)

Admission by Recommendation

Target of exam.	Only Junior high school students in Tokyo.
Admission method	school reports (chōsasho), group discussion, personal interviews, essay compositions, and skills tests etc.
Procedure	Submit a nomination request and receive a recommendation from the junior high school principal.
Number of applicants	Not many.
How to apply	★ Apply online.

Entrance Examination for Special Quota

1/26 (Thu)

2/15 (Wed)

**Special Quota For Foreign National Students
residing in Tokyo Metropolitan District.**

Target/ Qualification	Foreign students coming to Japan (Dual nationality allowed) <i>(* Third-year junior high school students in Japan are eligible for those who have come to Japan for up to three years. There is no limit to the number of years for those who have graduated from a local school.)</i> People who live or plan to live in Tokyo
Admission method	Essay composition(Japanese or English) and Interview(Japanese or English)
Procedure	Apply after undergoing qualification confirmation.
Number of applicants/ Test month	Few. (Recruiting 15 to 25 people at one school) Jan(7 schools) Feb(1 school)

Qualification of special quota for foreign students

When: December

Where: Tokyo Metropolitan Office

- ★ Check the qualification date by HP of schools or Tokyo Metropolitan Board of Education.
- ★ Prepare your application documents early.

Entrance Examination for Special Quota

2/15 (Wed)

Special Quota for Overseas returnee

Target/ Qualification	Having Japanese nationality, living (lived)abroad with the parents and is going to live in Tokyo until admission date.(include plans)
Admission method	<ul style="list-style-type: none">▪ Japanese▪ Math▪ English and Essay composition.▪ Interview and essay composition in Japanese or English. (For Local School Graduates Examination of Kokusai H. S.)
Procedure	Apply after being qualified for high school. (There is a limit to the qualification by the period of abroad and after returning)
Implementation schools/Number of applicants	4 schools / Few
How to apply	Take the application form to the high school where you will take the entrance examination.

Entrance Examination for Special Quota

2/15 (Wed.)

Special Quota For Returning Japanese Displaced by the War in China and their Descendants

Target/ Qualification	Having an address in Tokyo along with the parents who are repatriates. Or is certain to have an address until the admission date and continue to go to school from Tokyo after that.
Admission method	Interview and essay composition in Japanese.
Procedure	Apply after confirming your qualification at the high school or Tokyo Metropolitan Board of Education. You have to prepare your application documents. (Repatriation Certificate etc.)
Implementation schools/Number of applicants	3 schools / Few
How to apply	Take the application form to the high school where you will take the entrance examination.

2/21 (Tue)

Academic Performance Test

★ Apply online.

Full-time high school

First Exam • The Divisive Previous Exams

Subjects: 5 subjects

(Japanese • Math • English • Social Studies • Science)

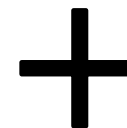
Part-time high school

First Exam • The Divisive Previous Exams

Subjects: almost 3 subjects

(Japanese • Math • English)

The school decides the number of subjects.



Interview

Academic Performance Test

★ Apply online.

3/9(Thu)



Full-time and Day and Night
Part-Time high school

Second Exam・The Divisive Late Exam

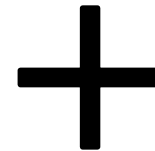
Subjects : 3 subjects

(Japanese・Math・English)

3/27 (Mon)



Part-time high school



Interview
✕ only
Japanese

Second Exam

Subjects : 3 subjects

(Japanese・Math・English)

★ Take the
application form to
the high school.