

# Preparation for Entrance Examination



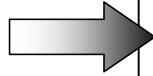
- 1. Future learning schedule**
- 2. Let's decide the school  
you want to study!**

# ~For 9<sup>th</sup> grader in Japanese junior high school~

## 1. Schedules for future exam.

July

First survey about future perspectives

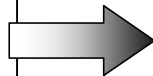


- Do you like to attend high school or find employment?
- Do you like to go to a Tokyo Metropolitan high school?
- Do you like to go to a private school?
- Do you wish to attend a particular high school?

Academic performance of 1st Semester

- Academic records of the 1st semester are crucial!

Parent-Teacher-Student Meeting



- Which is your first choice of high school?
- Study plans for summer vacation.
- Visiting a high school during summer holidays.

Summer Vacation

- First half, latter half: School curriculum follow-up
- Visit a high school and experience lessons first.

◎But no plans this year for covid-19

Let' s study hard during the summer vacation!

**Summer vacation is the most important time for your studies!**

Japanese/Math/English

Attend tutorial support class, if you can.

## September 2nd Semester

Gather information on High Schools!  
Attend school cultural festivals!  
Introductory sessions/trial classes in September–December as usual.

But no plans this year for covid-19, so check the school Homepage carefully.

·Take a trial examination at school and / at other venues, in the second semester.

## October

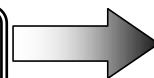
Mid-term Examinations

Guidance session for future courses at Junior High Schools.

## November

Second survey about future perspectives

Parent–Teacher–Student Meeting



Which High Schools will you apply for?

· Would you like a recommendation to attend a private, or a Tokyo Metropolitan high school?

Final Examinations

December

**Internal academic evaluation will be completed**

Evaluation will be based on performance records from 1<sup>st</sup> and 2<sup>nd</sup> semesters!

Third survey about future perspectives

Parent-Teacher-Student Meeting

Academic performance of 2nd Semester

\* *Career consultation about private high school*

From December 15th: Consultation on high school enrollment (with Junior high school teachers and private high school teachers in Tokyo) as usual year.

Recommended students & those who will take exams.

©But this year, the schedule is not certainly.

Fill in high school names in application forms

Final Decision!

- Make sure to try admission exams from previous years of your targeted schools.  
Japanese/Math/English (Social studies/Science)
- Attend nearby tutorial support class if you can.

Winter Vacation

# 3rd semester

## January Entrance examination

Internal recommendation to enter private high school  
Internal recommendation to enter Tokyo Metropolitan high school  
Special quota for foreign national students

\* It is difficult to secure an internal recommendation for a Tokyo Metropolitan high school.

## February Entrance Examination

Admission exams for private high school  
Admission exams for Tokyo Metropolitan high school

- Special quota for overseas returnee
- Special quota for returning Japanese displaced by the War in China and their descendants
- The first-term exam.

Admission exams for Tokyo Metropolitan high schools (the second-term exam, The divisive late exam)

Admission exams for Tokyo Metropolitan part-time high schools (the second-term exam)

For covid-19, application method may change.

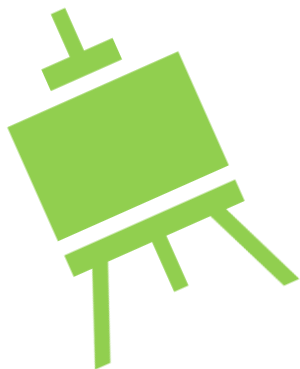
Let's find out the entrance examination information carefully!

## 2. Let's decide the school you want to study!

Carefully research the features and choose the school that suits you !

School atmosphere or features, Level, Distance from home, Japanese language support, etc.

**Next; Schools with relatively many foreign students**



# 1. Schools with Special Quota For Foreign National Students

Full time system · Foreign students who have been in Japan for less than three years

High School Name	Exam day	
Asuka	1/26	<b>❖ Content of entrance examination</b>  ▪ Essay composition (Japanese or English) and Interview (Japanese or English)  <b>❖ There is a qualification confirmation.</b>
Tagara		
Takenodai		
Minami-katsushika		
Fuchu-Nishi		
Rokugo-Koka		
Suginami-Sogo		
Kokusai	2/15	

## 2. Day and Night Part-Time High Schools

### Credit system

You can choose three parts in the morning, afternoon and evening and enter the school


High School Name	Exam day	
Hitotsubashi	The first-term exam 2/21	❖ Content of entrance examination
Asakusa	The second-term exam 3/9	Japanese・Math・ English and Interview(Japanese)
Shinjuku-yamabuki		
Ogikubo		❖ Graduated 3~4 years
Sunagawa		
Hachioji-takushin		



### 3. Challenge School

Part-time High School based on credits.

Offer morning, afternoon and evening classes.

High School Name	Exam day	
Kirigaoka	2/21	❖ Content of entrance examination
Setagaya-izumi		▪ Entrance application
Ooedo		▪ Interview
Roppongi		▪ Essay compositions
Minorigaoka		✂ They are instead of
Hachioji-takushin		exams( Eng. Math Jap.) or academic record of Junior High School.
		❖ Small classes
Odaihashi		

## 4. Encourage School

Full time system

Learning from basics

Experience-based small class adapted to ability of each student

High School Name	Exam day	
Adachi-higashi	2/21	❖ Content of entrance examination
Kamata		▪ Junior high school record
Akirudai		▪ Interview
Higashi-murayama		▪ Essay composition
Nerima-Kogyo		
Nakano-Kogyo		

## 5. Night Part-Time High School

Studying from 5 p.m. to 9 p.m. in the evening.

Graduation in 4 years (3years graduation possible at some school)

High School Name	Exam day	
<b>There are about 40 night part-time high schools in Tokyo</b>	The first- term exam <b>2/21</b>	❖ Content of entrance examination
	The second- term exam <b>3/27</b>	Japanese・Math・English and Interview
		❖ Graduated 3~4 years
		❖ Small class ❖ Japanese support system

# Map of Metropolitan High School

Schools with Special Quota for Foreign Students (8 schools)

◎ ⇒ Night and Daytime Part-time high school (6 schools)

