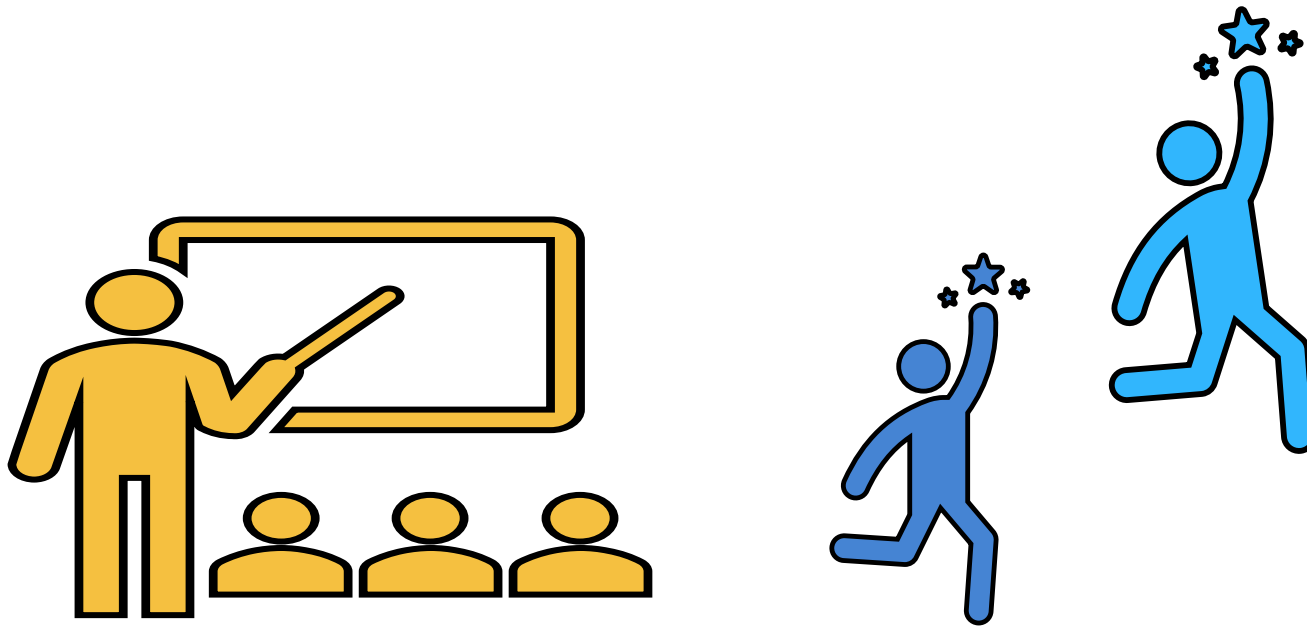




# Tokyo Metropolitan High School



# Full-Time Program and Part-Time Program

The Difference Between Full-Time Program and Part-Time Program.

2 types of “Which time do you go to school in?”

Program	Days to go to school · class time
 <b>Full-Time</b>	<ul style="list-style-type: none"><li>• Class starts from 8:30 am to 3 pm.</li><li>• School day is from Mon to Fri but some school has class on Sat.</li><li>• 3 years for graduation.</li></ul>
 <b>Part-Time</b>	<ul style="list-style-type: none"><li>• Take class either in morning, afternoon and evening (class time is 4 hours)</li><li>• Day and Night Part-Time High Schools which has the 3 time zone and Night Part-Time High Schools using the same school building as Full-Time High School.</li><li>• 4 years for graduation. 3 years for graduation is possible by taking the credit outside of school or taking classes in other time zones.</li></ul>

There are grade system and credit system schools.

<b>grade system</b>	<ul style="list-style-type: none"><li>◇ What you study differs by the Grade ( 1 — 3 · 4 Grader ) .</li><li>◇ If you cannot get the credit of the year, you will be Ryunen (repeating the same grade).</li></ul>
<b>credit system</b>	<ul style="list-style-type: none"><li>◇ No school year, just choose and take the subject you need.</li><li>◇ No school year so no ryunen but you have to take the credit needed for graduation.</li></ul>

**1 class hour in a week ⇒ 1 credit**

# There are 4 types according to what you study.

<b>types</b>	<b>what you study</b>
General Course	▪ Study normal subjects ( Japanese, Social Studies, Math, Science, English etc.)
General Course - Course System	▪ General Course but also focused on the specific field. (Foreign Cultural Course or Figurative Course etc.)
Specialized Subject	▪ Study the basic of technology and professional knowledge and skills that to profession directly. (Various fields such as Commerce, Industry, Agriculture, Information, Art etc.)
General Subject	▪ Subjects of Both General Course and Specialized Subject are available