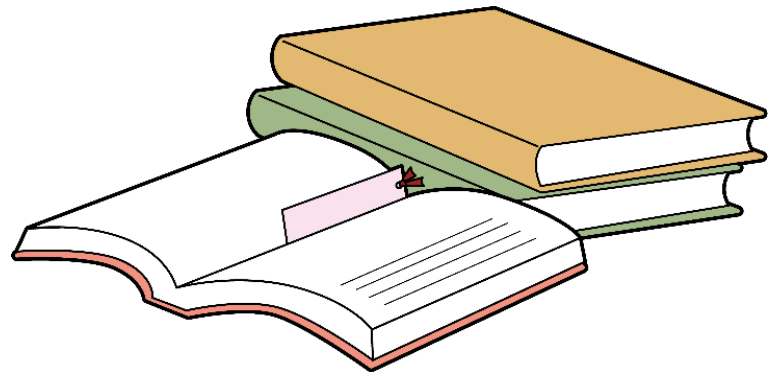


# Private High School



# Entrance Exam System of Private High School

Admission Method	content
<b>General Entrance Exam</b>	Almost 3 subjects Japanese, Math, English
<b>Admission by Recommendation – Single Application (For your First Choice High School)</b>	If you pass, make promise to go to that high school. Consult with your junior high school teacher.
<b>Admission by Recommendation – Dual Application (Can apply to different schools)</b>	You can apply to more than one high school, and if your first choice is not accepted, you can apply to both schools. Can also go to private high school

Important!

- ★ Since the entrance examination schedule and recommendation criteria differ depending on the school, be sure to check with the school.
- ★ Once you decide which school you want to attend, let's participate in information sessions and open classes many times.
- ★ This year's schedule is not yet set. Check the high school's website for more information!

# The Costs of Private High School

When	Costs	Content
1 <sup>st</sup> year	<p><b>1,000,000~ 2,000,000yen</b></p> <p><b>Very different depending on the school. Check carefully on the website etc.</b></p>	<p>Fee for entrance, Workshops, Facilities, Air-conditioning &amp; heating, Parent associations, and School trip reserve funds, etc.</p> <hr/> <p><b>Tuition</b>  <b>Starting from the 2024, the Tokyo Metropolitan Government will pay tuition for private high schools up to a maximum of approximately 480,000 yen if you apply for it.</b></p> <p><b>Others are at your own expense. But in some school, there are also scholarship. Let's ask the school about it.</b></p>
2 <sup>nd</sup> ~ 3 <sup>rd</sup> Year	<p><b>Less than the 1<sup>st</sup> year</b></p>	