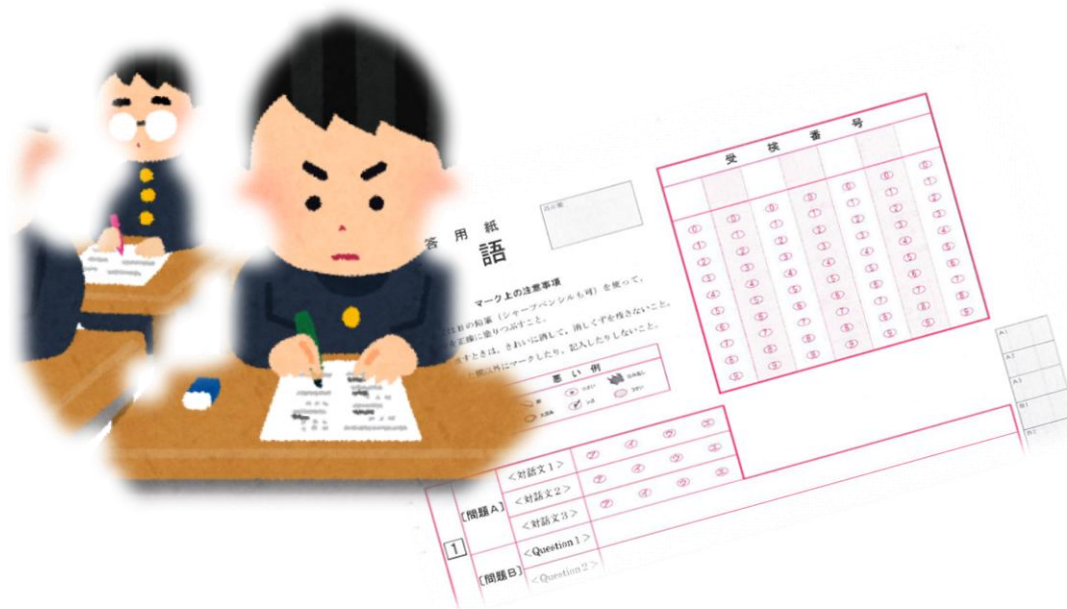


# About Entrance Examination



# Application Qualification

(People who can take the entrance examination of the metropolitan high school )

- ◎ **Completed 9 years of school education**
- ☀ **Full-time**  
=People living in Tokyo with parents
- 🌙 **Part-time**  
=People living in Tokyo or working in Tokyo

**Important!!**

In the metropolitan high school examination, you must enroll in the first high school you got accepted to

**1/26 (Mon) - 27 (Tue)**

**Admission by Recommendation**

<b>Target of exam.</b>	Only 3 <sup>rd</sup> Year junior high school students in Tokyo.
<b>Admission method</b>	school reports (chōsasho), group discussion, personal interviews, essay compositions, and practical tests etc.
<b>Procedure</b>	Submit a request for recommendation to your junior high school and receive a recommendation from the junior high school principal.
<b>Number of applicants</b>	Not many.
<b>How to apply</b>	★ <b>Apply online.</b>

# Entrance Examination for Special Quota

1/26 (Mon)

2/16 (Mon)

**Special Quota For Foreign National Students  
residing in Tokyo Metropolitan District.**

<b>Target/ Qualification</b>	<p>Both foreign and Japanese nationals can take the exam.</p> <p>(* Third-year junior high school students in Japan are eligible for those who have come to Japan for up to three years and 3 months. There is no limit to the number of years for those who have graduated from a local school.)</p> <p>People who live or plan to live in Tokyo and live with a parent or guardian</p>
<b>Admission method</b>	<p>Essay composition(Japanese or English) and Interview(Japanese or English)</p>
<b>Procedure</b>	<p>Apply after undergoing qualification confirmation. Take the application form to the high school.</p>
<b>Number of applicants/ Test month</b>	<p>12 schools/Few. (Recruiting 15 to 25 people at one school)</p> <p>Jan(11 schools)      Feb(1 school)</p>

# Qualification of special quota for foreign students in Tokyo

**When: December**

**Where: Tokyo Metropolitan Office**

★ Check the homepage of schools or Tokyo Metropolitan Board of Education for the qualification dates.

★ Prepare your application documents early.

# Entrance Examination for Special Quota

**2/16 (Mon)**

## Special Quota for Overseas returnee

<b>Target/ Qualification</b>	Having Japanese nationality, living (lived) abroad with their parents and is going to live in Tokyo until admission date.
<b>Admission method</b>	<ul style="list-style-type: none"> <li>▪ Japanese ▪ Math ▪ English and Essay composition.</li> <li>▪ Interview and essay composition in Japanese or English. (For Local School Graduates Examination of Kokusai H. S.)</li> </ul>
<b>Procedure</b>	Apply after being qualified for high school. (There is a limit to the qualification based on the length of time you lived abroad and after returning)
<b>Implementation schools/Number of applicants</b>	4 schools / Few
<b>How to apply</b>	<b>Internet Application</b>

# Entrance Examination for Special Quota

**2/16 (Mon)**

**Special Quota For Returning Japanese Displaced by the War in China and their Descendants**

<b>Target/ Qualification</b>	Having an address in Tokyo along with the parents who are repatriates or is certain to have an address until the admission date and continue to go to school from Tokyo after that.
<b>Admission method</b>	Interview and essay composition in Japanese.
<b>Procedure</b>	Apply after confirming your qualification at the high school or Tokyo Metropolitan Board of Education. You have to prepare your application documents. (Repatriation Certificate etc.)
<b>Implementation schools/Number of applicants</b>	3 schools / Few
<b>How to apply</b>	Take the application form to the high school where you will take the entrance examination.

**2/21 (Sat)**

# Academic Performance Test

**★ Apply online.**

## Full-time high school

First Exam • The Divisive Previous Exams

**Subjects: 5 subjects**

**(Japanese • Math • English • Social Studies • Science)**

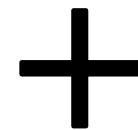
## Part-time high school

First Exam • The Divisive Previous Exams

**Subjects: almost 3 subjects**

**(Japanese • Math • English)**

The school decides the number of subjects.



**Interview**



# Academic Performance Test

★ Take the application form to the high school.

3/10(Tue)



Part-Time high school

The Divisive Late Exam

Subjects : 3 subjects  
(Japanese • Math • English)

3/26(Thu)



Part-time high school +

Second Exam

Subjects : 3 subjects  
(Japanese • Math • English)

Interview  
✕ only  
Japanese

★ Take the  
application form to  
the high school.